

# “Attitudes and Practices for Building Positive Goal-Oriented Relationships”

NIHSDA  
June 11, 2014

Guyline Richard, MD, MPH  
Program Manager Training  
and Technical Assistance



THE NATIONAL CENTER ON  
**Parent, Family, and  
Community Engagement**

# Introductions



Hello  
Guten Tag  
Nyob zoo  
Salaam  
Kia ora  
Bonjour  
Habari  
Guten Tag  
Nyob zoo  
Ni hao ma  
Buenos días  
Osivo  
KONNIHIT WA  
CERVIST

bonjour ciao HEY THERE!  
hola hello  
GREETINGS good morning hi



# Evaluation

---

## Instructions:

Please fill out the box  
in the upper right hand  
corner of your  
Presentation Survey  
with the information  
located to the left

- Event Name: **NIHSDA**

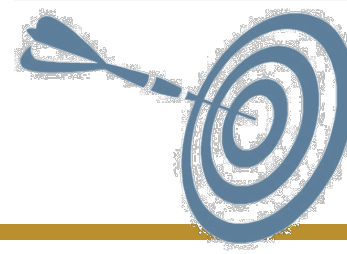
- Date: **June 11, 2014**

Presenter (s): **Guylaine**

Presentation:

**Attitudes and Practices**

# Training Objectives



- Explore attitudes and practices that support us in being strength-based in our interactions beside families.
- Share resources to build strong relationships between staff , families, and their children, celebrate their unique cultures, and connect them with their community.

# Your Participation is Key

---



“A little knowledge that acts is worth infinitely more than much knowledge that is idle.”

-Kahlil Gibran



<b>K</b> What I <b>K</b> now	<b>W</b> What I <b>W</b> ant to Know	<b>L</b> What I <b>L</b> earned	<b>D</b> What Will I Do With This knowledge?

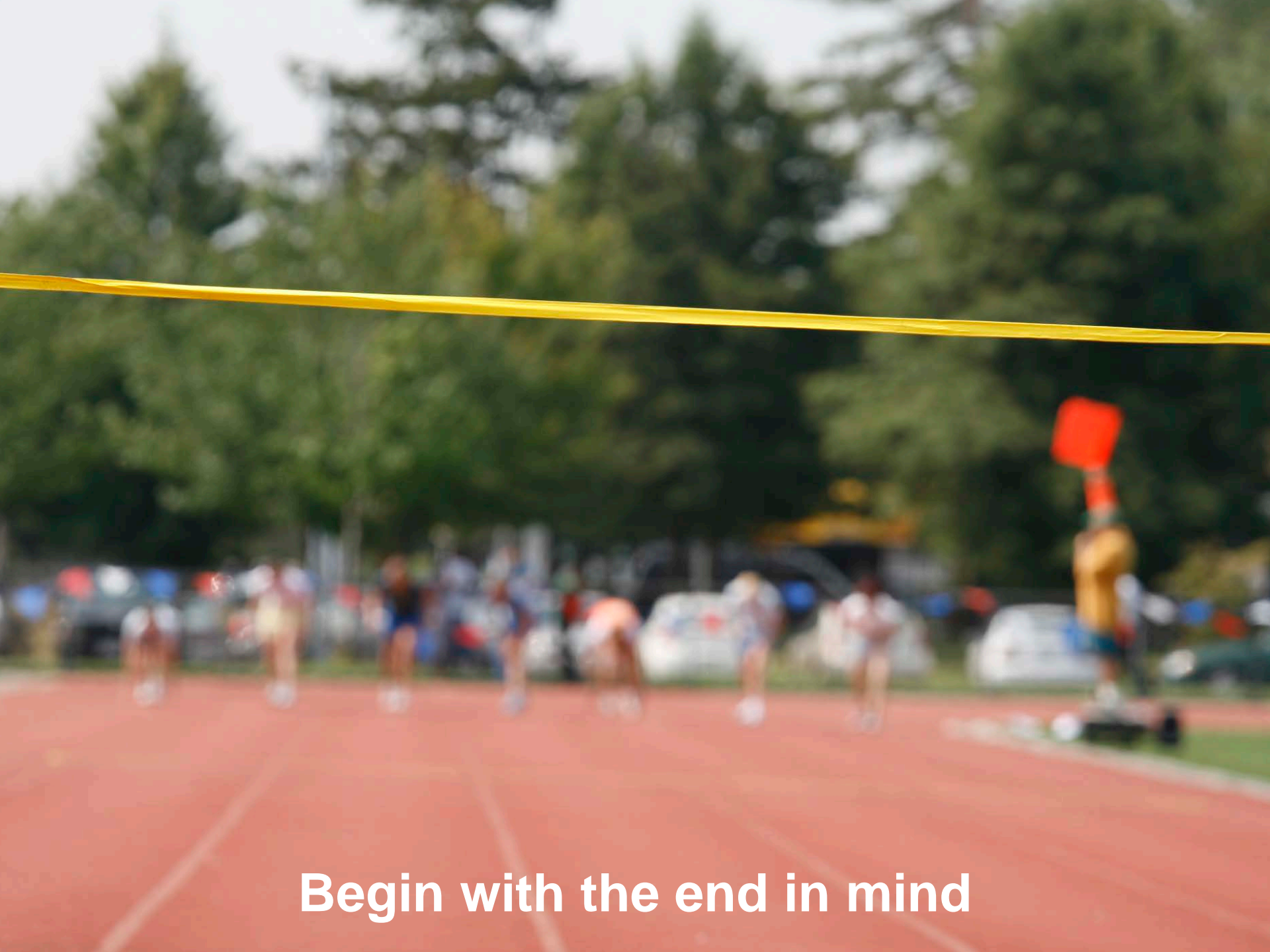
# PFCE Framework



## **THE HEAD START PARENT, FAMILY, AND COMMUNITY ENGAGEMENT FRAMEWORK**

PROMOTING FAMILY ENGAGEMENT  
AND SCHOOL READINESS,  
FROM PRENATAL TO AGE 8

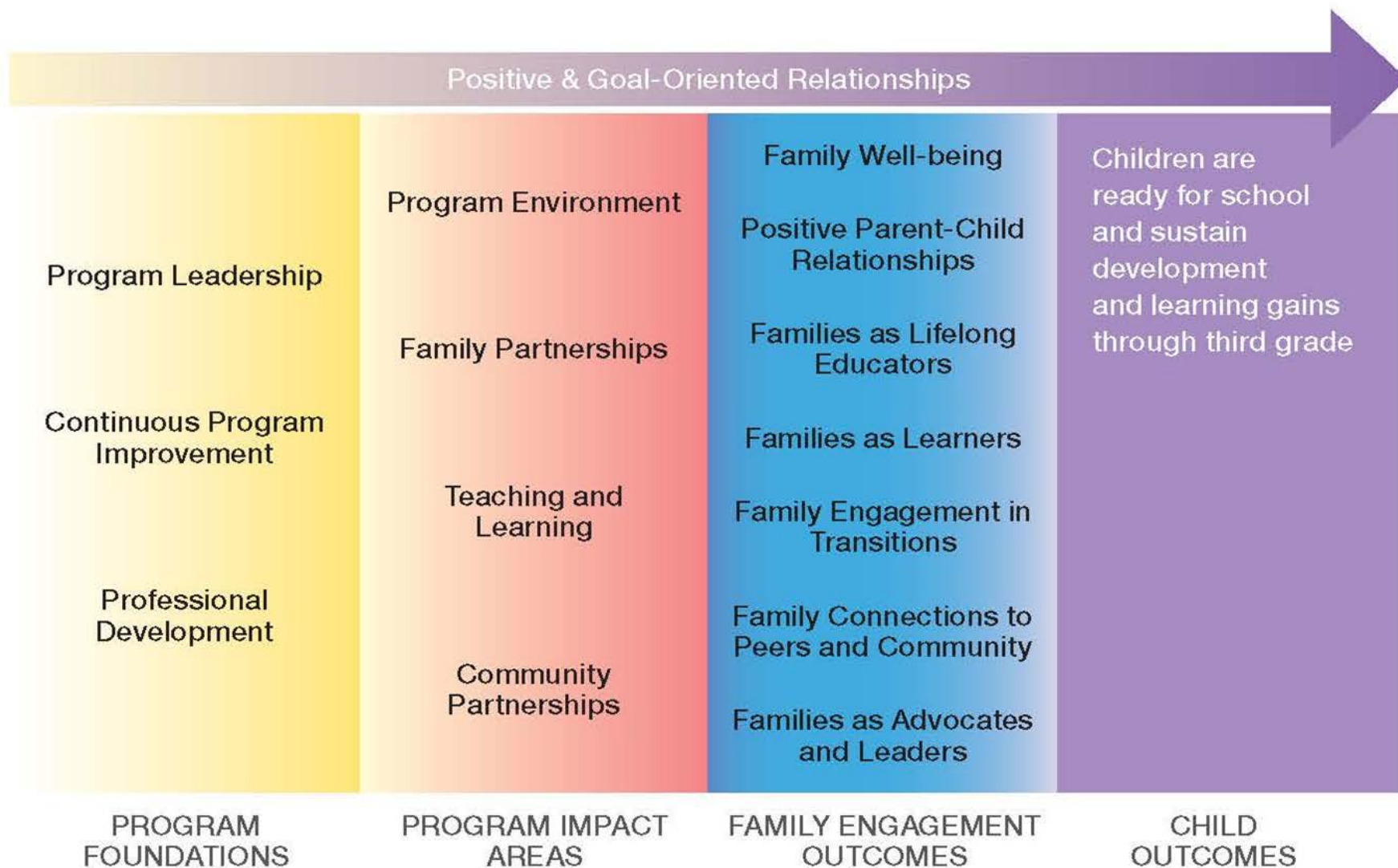




**Begin with the end in mind**

## PARENT, FAMILY, AND COMMUNITY ENGAGEMENT FRAMEWORK

When parent and family engagement activities are systemic and integrated across program foundations and program impact areas, family engagement outcomes are achieved, resulting in children who are healthy and ready for school. Parent and family engagement activities are grounded in positive, ongoing, and goal-oriented relationships with families.



# Head Start Parent and Family Engagement Outcomes

## 1. FAMILY WELL-BEING

Parents and families are safe, healthy, and have increased financial security.

## 2. POSITIVE PARENT-CHILD RELATIONSHIPS

Beginning with transitions to parenthood, parents and families develop warm relationships that nurture their child's learning and development.

## 3. FAMILIES AS LIFELONG EDUCATORS

Parents and families observe, guide, promote, and participate in the everyday learning of their children at home, school, and in their communities.

## 4. FAMILIES AS LEARNERS

Parents and families advance their own learning interests through education, training and other experiences that support their parenting, careers, and life goals.

## 5. FAMILY ENGAGEMENT IN TRANSITIONS

Parents and families support and advocate for their child's learning and development as they transition to new learning environments, including EHS to HS, EHS/HS to other early learning environments, and HS to kindergarten through elementary school.

## 6. FAMILY CONNECTIONS TO PEERS AND COMMUNITY

Parents and families form connections with peers and mentors in formal or informal social networks that are supportive and/or educational and that enhance social well-being and community life.

## 7. FAMILIES AS ADVOCATES AND LEADERS

Parents and families participate in leadership development, decision-making, program policy development, or in community and state organizing activities to improve children's development and learning experiences.

# When we actively engage with each other and families...

---

*...All Benefit.*

- ***Children*** will be healthier and more ready for kindergarten
- ***Families*** will be more engaged in your program & in the public school
- ***Staff and programs*** will achieve higher levels of quality
- ***Community partners*** will provide stronger supports to the next generation



# What are the ingredients for Engagement success?

---

- Building goal-directed relationships with families
- **A set of beliefs, attitudes, behaviors and activities**
- Crossing contexts - at home, in the early childhood program, school & community
- A shared responsibility



# Relationship-based Practice

---



Positive & Goal-Oriented Relationships

# What are Positive, Goal-Oriented Relationships?



Engaging in mutually respectful, goal-oriented partnerships with families to promote both child and family outcomes

# Using a set of beliefs, attitudes, practices, and activities





# Attitude

---

A frame of mind that we  
take towards someone



# Strengths-Based Attitudes

---

- Families are the first and most important teachers of their children
- Families are our partners with a critical role in supporting child's development
- Families have expertise about their child
- Families have something valuable to contribute

# Relationship-Based Practices for Family Engagement

---

1. Describe observations of the child's behavior to open communication with the family
- 2. Reflect on the family's perspective**
3. Support parental competence
- 4. Focus on the family-child relationship**
5. Value a family's passion
6. Reflect on your own perspective

# What practices and attitudes does this teacher use with this parent?



# Report Out!

---





# Additional Resources to Support You

## Head Start and Early Head Start Relationship-Based Competencies

for Staff and Supervisors who Work with Families



## Best Practices in Family and Community Engagement

Video Series



## Research to Practice Series

Overview



<div><b>K</b></div> <div>What I <b>K</b>now</div>	<div><b>W</b></div> <div>What I <b>W</b>ant to Know</div>	<div><b>L</b></div> <div>What I <b>L</b>earned</div>	<div><b>D</b></div> <div>What Will I Do With This <b>k</b>nowledge?</div>

# Remember: It is Everybody's Business

---





“In the end, what matters is what we do with parents and how that changes their interactions with their children. When they get a job or get a degree or get involved in program governance, it can transform how they see themselves and how they see the future for their children as well.”

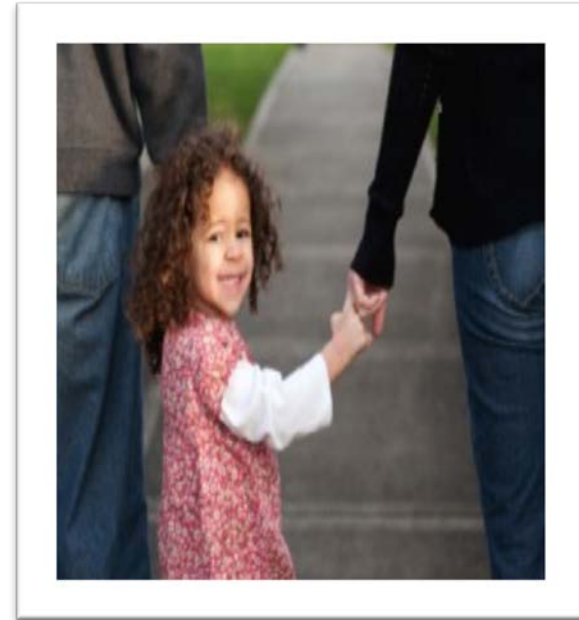
Office of Head Start Manager

# Evaluation

---



# Thank you!



***Please contact us or your ECE Specialist:***

***NCPFCE@childrens.harvard.edu***

***Or***

***855-208-0909 (Toll Free)***

***www.ncpfce.org***